



**NURTURING CARE**  
FOR EARLY CHILDHOOD DEVELOPMENT

# Implementation of the Nurturing Care Framework: Committing to Action

**Shekufeh Zonji**

Global Coordinator  
ECD Action Network  
ZONJI @ ECDAN.org



# FIVE STRATEGIC ACTIONS



Lead and invest



Focus on families



Strengthen services



Monitor progress



Use data and innovate

## MILESTONES TO BE ACHIEVED IN THE NEXT 5 YEARS (BY 2023)

NATIONAL MILESTONES	GLOBAL MILESTONES
 <p>All countries have developed a national coordination mechanism and a plan to address nurturing care in a holistic way.</p>	<p>Global stakeholders have established functional mechanisms for multi-sectoral coordination and harmonized action in support of nurturing care.</p>
 <p>All countries are addressing nurturing care in national communication strategies and through community structures and local leaders.</p>	<p>Global stakeholders have launched a global advocacy campaign for nurturing care and promote effective approaches for engaging communities and giving them agency.</p>
 <p>All countries are strengthening their workforce's capacity to support responsive caregiving and early learning – among all families and children, including those with additional needs.</p>	<p>Global stakeholders have developed and updated guidelines, service packages and implementation guidance for nurturing care, and promote their use</p>
 <p>All countries are collecting data about the quality and coverage of interventions for all five components of nurturing care.</p>	<p>Harmonized global indicators and measurement framework for nurturing care are available and used to assess implementation and impact.</p>
 <p>All countries are investing in local research to strengthen implementation of nurturing-care interventions.</p>	<p>Global stakeholders have identified research priorities for nurturing care and invest in studies to address them.</p>



# Country name here

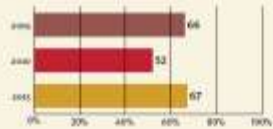
## Demographics

Population	162 957 000
Annual births	3 088 000
Children under 5	1 236 0005 (7.6%)
Under 5 mortality	34/1 000

## Threats to Early Childhood Development

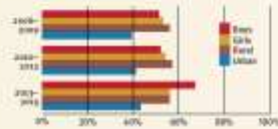
Maternal mortality	176/100 000	Young mothers (births by 18y)	36 %
Low birthweight	22 %	Preterm births	13.7 %
Child poverty	43 %	Under 5 stunting	36 %
Harsh punishment	73 %	Inadequate supervision	12 %

## Young children at risk of poor development



At risk in 2005, 2010 and 2015, using a composite indicator of under 5 stunting and poverty

## Equity: Risk by gender and location



## Lifetime cost of growth failure in early childhood



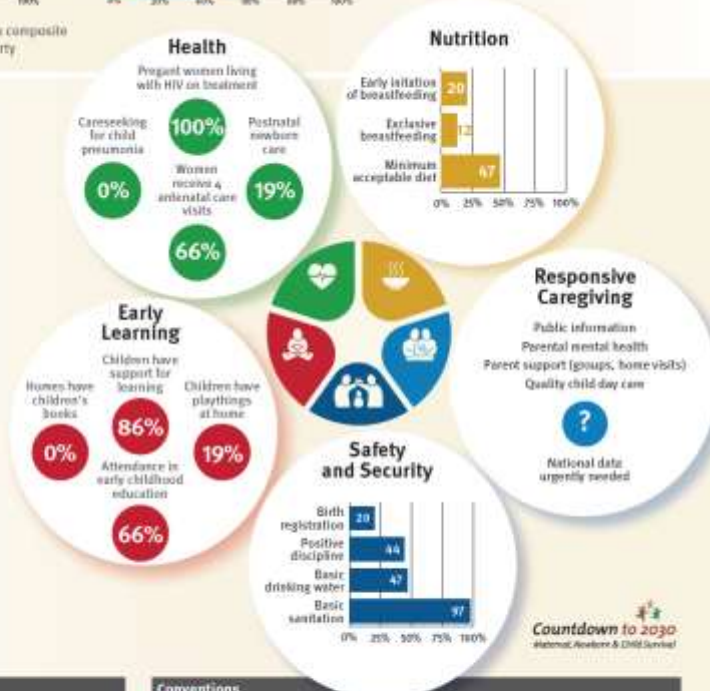
## Support for Early Childhood Development: Nurturing Care

Parents and caregivers need a facilitating environment of laws, policies, services and community support to assist them to provide their young children with nurturing care.

## Support for Early Childhood Development: Facilitating Environments

Policies	
✓ Paid maternity leave	✗ Paid paternity leave
✓ National minimum wage	
✓ Non-discriminatory child and family social protection	
✓ International Code of Marketing of Breastmilk Substitutes	

Conventions	
✓ Convention on the Rights of the Child	
✓ Convention on the Rights of People with Disabilities	
✗ CRC Sale of Children, Child Prostitution & Child Pornography	
✓ Convention on Protection of Children and Cooperation in Respect of Intercountry Adoption	



- 91 Country Profiles
- Developed by authors of Lancet ECD series
- Selection based on 1 of 3 criteria:
  1. Countries with 30% or more of children under age 5 at risk of poor development
  2. Countries that accounted for 95% of children under age 5 at risk for poor development from LMIC
  3. Countries included in Countdown to 2030
- What is needed?
  - Create demand for better data
  - Include indicators in DHS, MICS & other monitoring systems



# COUNTRY PROFILES for Early Childhood Development

## EARLY CHILDHOOD DEVELOPMENT



### Country name here

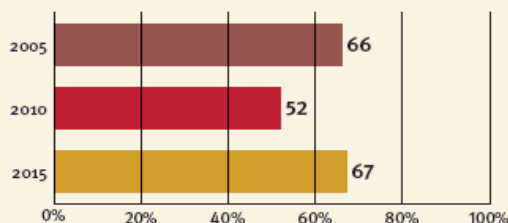
#### Demographics

Population	162 952 000
Annual births	3 088 000
Children under 5	1 236 0005 (7.6%)
Under 5 mortality	34/1 000

#### Threats to Early Childhood Development

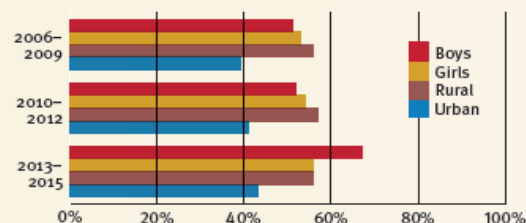
Maternal mortality	176/100 000	Young mothers (births by 18y)	36 %
Low birthweight	22 %	Preterm births	13.7 %
Child poverty	43 %	Under 5 stunting	36 %
Harsh punishment	73 %	Inadequate supervision	12 %

#### Young children at risk of poor development



At risk in 2005, 2010 and 2015, using a composite indicator of under 5 stunting and poverty

#### Equity: Risk by gender and location



#### Lifetime cost of growth failure in early childhood



Estimate in terms of % loss of annual adult wage

#### Health

#### Nutrition



# COUNTRY PROFILES for Early Childhood Development

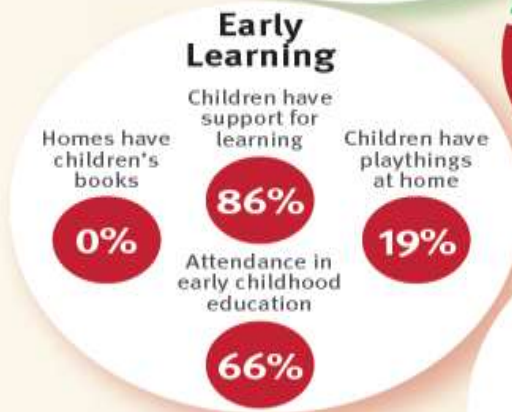
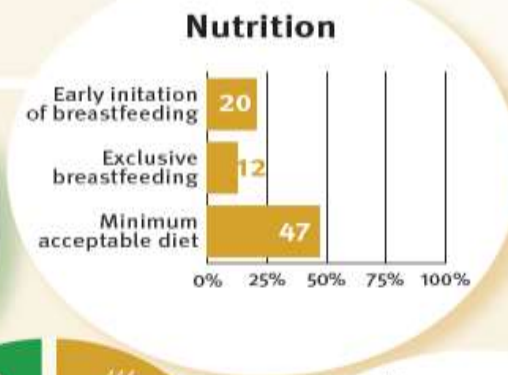
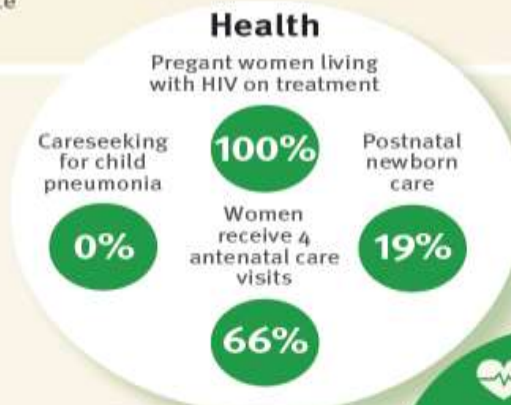
0% 20% 40% 60% 80% 100% 0% 20% 40% 60% 80% 100%

At risk in 2005, 2010 and 2015, using a composite indicator of under 5 stunting and poverty

## Support for Early Childhood Development: Nurturing Care

Parents and caregivers need a facilitating environment of laws, policies, services and community support to assist them to provide their young children with nurturing care.

## Support for Early Childhood Development: Facilitating Environments



Countdown to 2030  
Maternal, Newborn & Child Survival

Policies	
✓ Paid maternity leave	✗ Paid paternity leave
✓ National minimum wage	
✓ Non-contributory child and family social protection	
✓ International Code of Marketing of Breastmilk Substitutes	

Conventions	
✓ Convention on the Rights of the Child	
✓ Convention on the Rights of People with Disabilities	
✗ CRC Sale of Children, Child Prostitution & Child Pornography	
✓ Convention on Protection of Children and Cooperation in Respect of Intercountry Adoption	

# 8 COUNTRY CASE STUDIES

## Family Participatory Care in India

A gateway to nurturing small and sick newborns

## Greece

Nurturing care services for the youngest refugee children and their families

## South Africa

Side-by-side campaign promotes nurturing care for all children in South Africa

## Viet Nam

Integrated Early Childhood Development programme focusing on nurturing care

## Bulgaria

Building a new approach to nurturing care

## Serbia

Capitalizing on the health system's strengths to build a new approach to nurturing care

## Kazakhstan

Fostering cooperation between the health and social sectors to deliver better nurturing care services

## Scaling up nurturing care in Siaya County, Kenya

A county-wide effort to reach children through the health sector and beyond

The Integrated Early Childhood Development (IECD) programme applies a holistic cross-sectoral approach which aims to bring about optimum early childhood development, and thus reduce the widening disparities in maternal and child health indicators between ethnic minorities and the Kikuyu majority. Nurturing care, encompassing good health, nutrition, responsive caregiving, opportunities for early stimulation and learning, as well as safety and protection, is essential for setting young children on a path towards lifelong health and well-being. Viet Nam has joined governments around the world in developing and implementing policies, programmes and services in support of nurturing care to ensure that caregivers have the tools and information they need.

About one in five children, or approximately 5.5 million children experience at least two deprivations in education, health, nutrition, shelter, water and sanitation, or social inclusion. Under-five mortality rate among ethnic minorities is 53 per 1000 live births against a national rate of 20%. The national stunting rate is 24.9% and about 77% of children 0 to 3 years and 13% of children 3 to 6 years do not attend any formal pre-learning programme (MICS 2014).

The traditional structure of the Vietnamese family is patriarchal. Hierarchical roles are highly valued, with fathers acting as family heads responsible for decision-making and child discipline while mothers maintain the traditional institution role. This

In western Kenya, the government of Siaya County is demonstrating the vital role of subnational leaders in promoting nurturing care for early childhood development (ECD). The Governor is leading the scale-up of policies, programmes and services in support of nurturing care and ensuring that caregivers have the tools and information needed to promote health, nutrition, safety and security, responsive caregiving and early learning.

In Siaya County, we have prioritized early childhood development (ECD) as a high-impact intervention that will enable children in Siaya to achieve optimal development. The approach we are using to scale up ECD is multi-sectoral and led by government.

Dr. Samuel Omondi Omondi, County Director of Health, Siaya County

Context for nurturing care in Siaya



# NYAS Special Issue: Implementation Research & Practice for Early Childhood Development

**ANNALS** *of* THE NEW YORK  
ACADEMY OF SCIENCES



VOLUME 1499, SPECIAL ISSUE

MAY 2018

**Implementation Research and  
Practice for Early Childhood  
Development**

- Methods for integration of research findings into healthcare policy and practice.
- Understand the behaviour of healthcare professionals and other stakeholders as a key variable in the sustainable uptake, adoption and implementation of evidence-based interventions.
- Open Source
- Edited by Aisha K. Yousafzai (Harvard T.H. Chan School of Public Health), Frances E. About (McGill University), Milagros Nores (National Institute for Early Education), and Pia R. Britto (UNICEF)



# NYAS Special Issue: Implementation Research & Practice for Early Childhood Development

**ANNALS** *of* THE NEW YORK  
ACADEMY OF SCIENCES



VOLUME 1199, SPECIAL ISSUE

MAY 2018

Implementation Research and  
Practice for Early Childhood  
Development

## Implementation Reporting Guidelines developed:

- Distinguish effectiveness and implementation evaluations. Rationale for implementation evaluation.
- Theory of change model.
- Fidelity & Changes to:
  - intervention content,
  - behaviour change techniques,
  - delivery strategy,
  - intensity,
  - compliance,
  - personnel,
  - understanding and enactment of intervention skills.

# Implementation Guidelines

- “A **WHO guideline** is any document, whatever its title, that contains WHO recommendations about health interventions, whether they be clinical, public health or policy interventions.”
- “A **recommendation** provides information about what policy-makers, health-care providers or patients should do. It implies a choice between different interventions that have an impact on health and that have ramifications for the use of resources.”
- Systematic WHO Implementation Guidelines being developed on how to include Responsive Caregiving into policy.
- Guideline Development Group; External Review Committee; WHO Steering Group; Guideline Methodologist; Systematic Review Team
- WHO Guidelines must:
  - Must meet the highest quality standards for evidence-based guidelines
  - Must be based on high-quality systematic reviews of all relevant evidence
  - Consistent with internationally accepted best practices
  - Incorporate multiple processes to minimize bias and optimize usability
  - Must incorporate transparency in all judgments and decision making processes in order to be objective and impartial
- Will be available by the end of the year.



# Operational Guidance & Knowledge Hub

- Online Learning & Knowledge Hub
- Availability of toolkits, policies, best practices, frameworks
- User-centered design of the knowledge hub:
  - What was the most useful guidance document, tool or service used for implementing change in a policy or programme?
  - Why was it useful?
  - What was the least useful guidance document, tool or service you have used?
  - Why was it not useful?

# ZONJI @ ECDAN.ORG



# ECDAN First Wave Countries

## Country selection criteria

- Burden of children at risk
- Government commitment
- System readiness
- Committed partners
- Resources available

## Principles

- Interventions in all 5 components
- Multi-sectoral engagement
- Multi-disciplinary actions within the health sector
- One national plan under Government leadership, with partner alignment

## Current Progress:

- 8 First Wave Countries
- Multi-sectoral coordination networks
- Consultations across the country
- Learning Exchange between countries

# Summary: Global priorities in support of the Framework

## ***Measurement***

- Indicators for population-based assessment in children 0-5 years of age for measurement of progress towards SDG target 4.2.1
- Harmonized measurement frameworks for population and for individual assessments

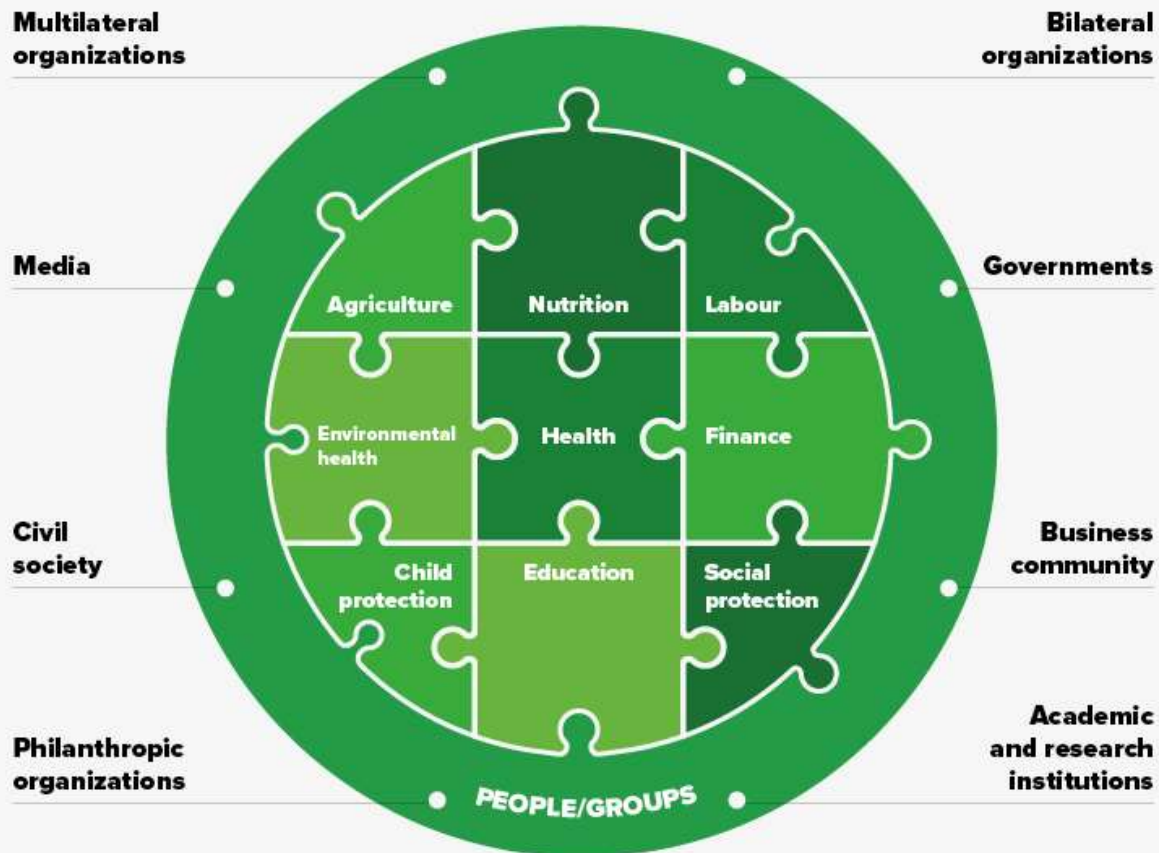
## ***Implementation***

- Implementation Guidelines to support development of national policies
- Operational Guidance to facilitate implementation: an online learning platform
- Tools for building work force capacities and strengthening services

## ***Research***

- Research to generate evidence of effective interventions, integrated delivery approaches, costs and cost-effectiveness, and impact across the life course

## EVERY SECTOR AND ALL STAKEHOLDERS COMMITTING TO ACTION



Take out your phones, note pads:

ZONJI @ ECDAN.ORG



# **NURTURING CARE**

FOR EARLY CHILDHOOD DEVELOPMENT

[www.NURTURING-CARE.ORG](http://www.NURTURING-CARE.ORG)

