

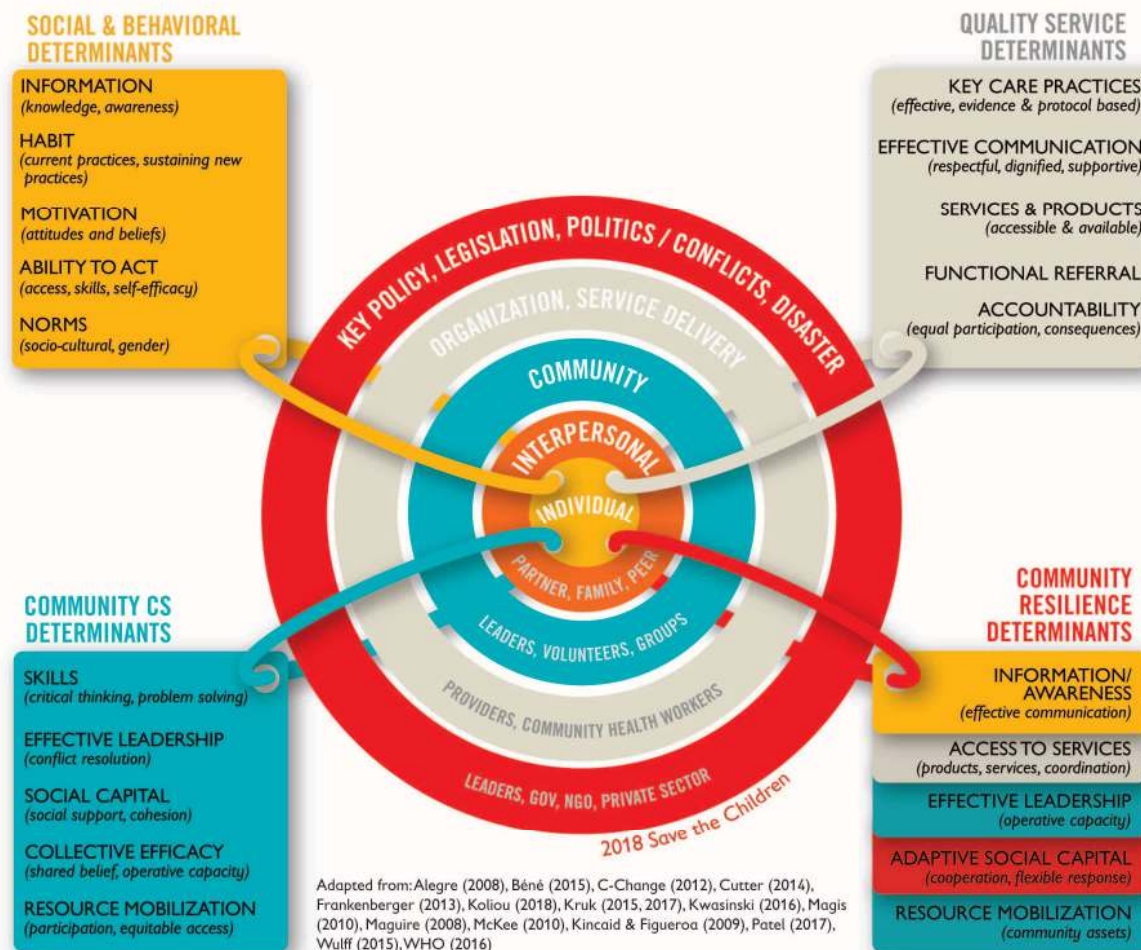


INTEGRATED SOCIAL AND BEHAVIOR CHANGE FRAMEWORK

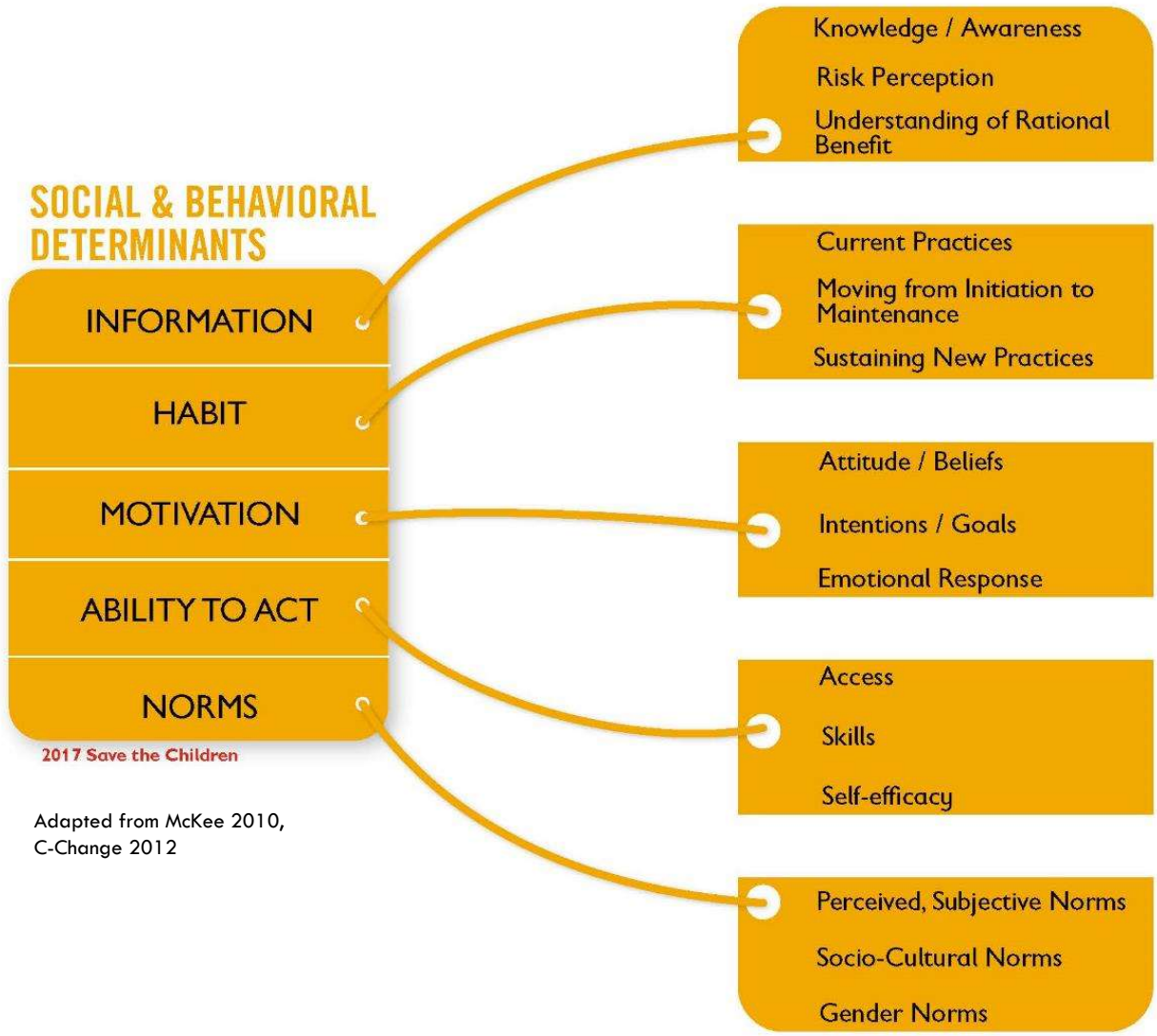
Save the Children has developed an integrated, theory based SBC framework to determine the relative weight of specific social and behavioral determinants that make healthy practices difficult or impossible.

This allows identifying tailored and suitable SBC strategies combining both behavior change with community engagement.

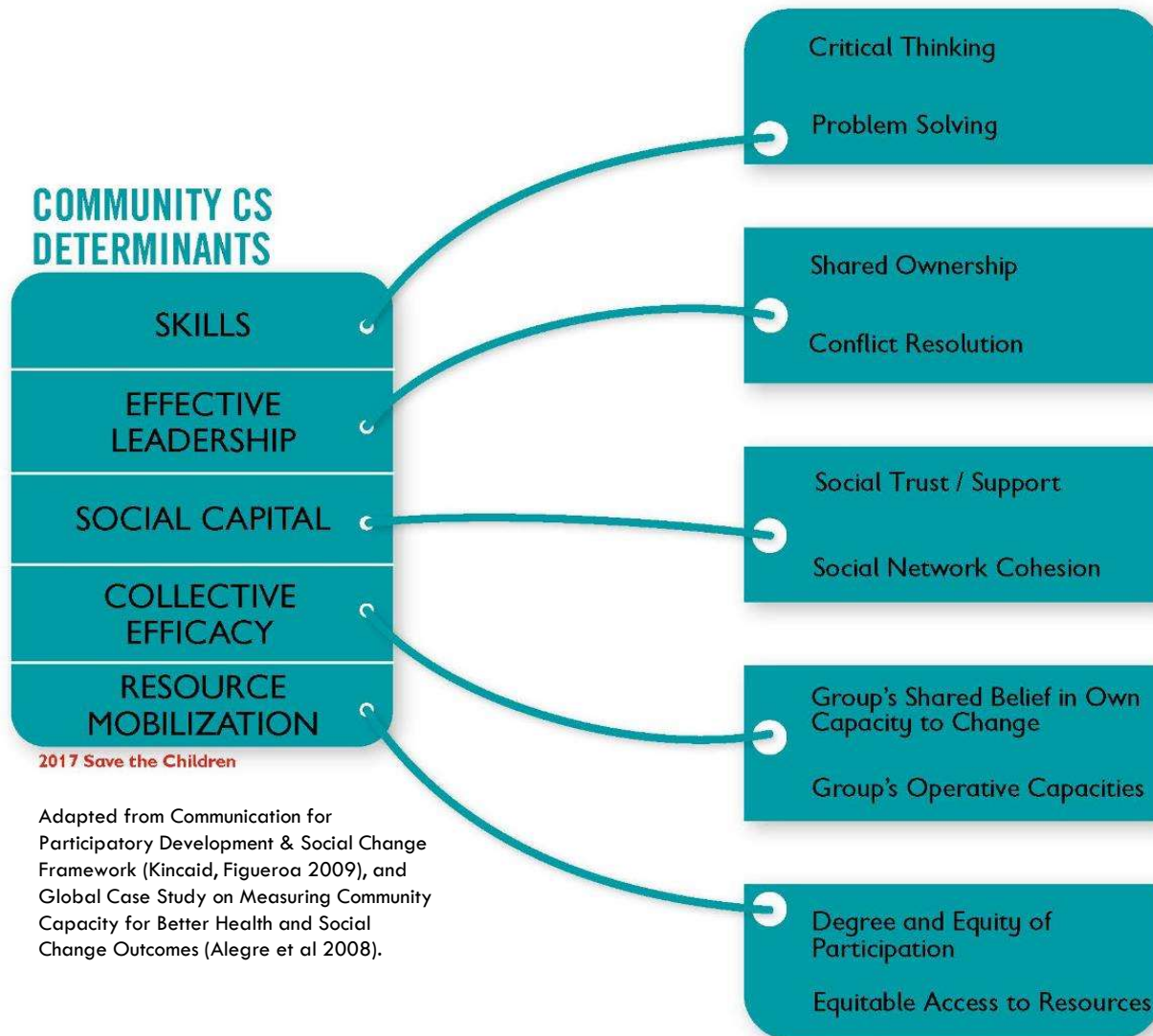
SOCIO-ECOLOGICAL MODEL



SOCIAL & BEHAVIORAL DETERMINANTS



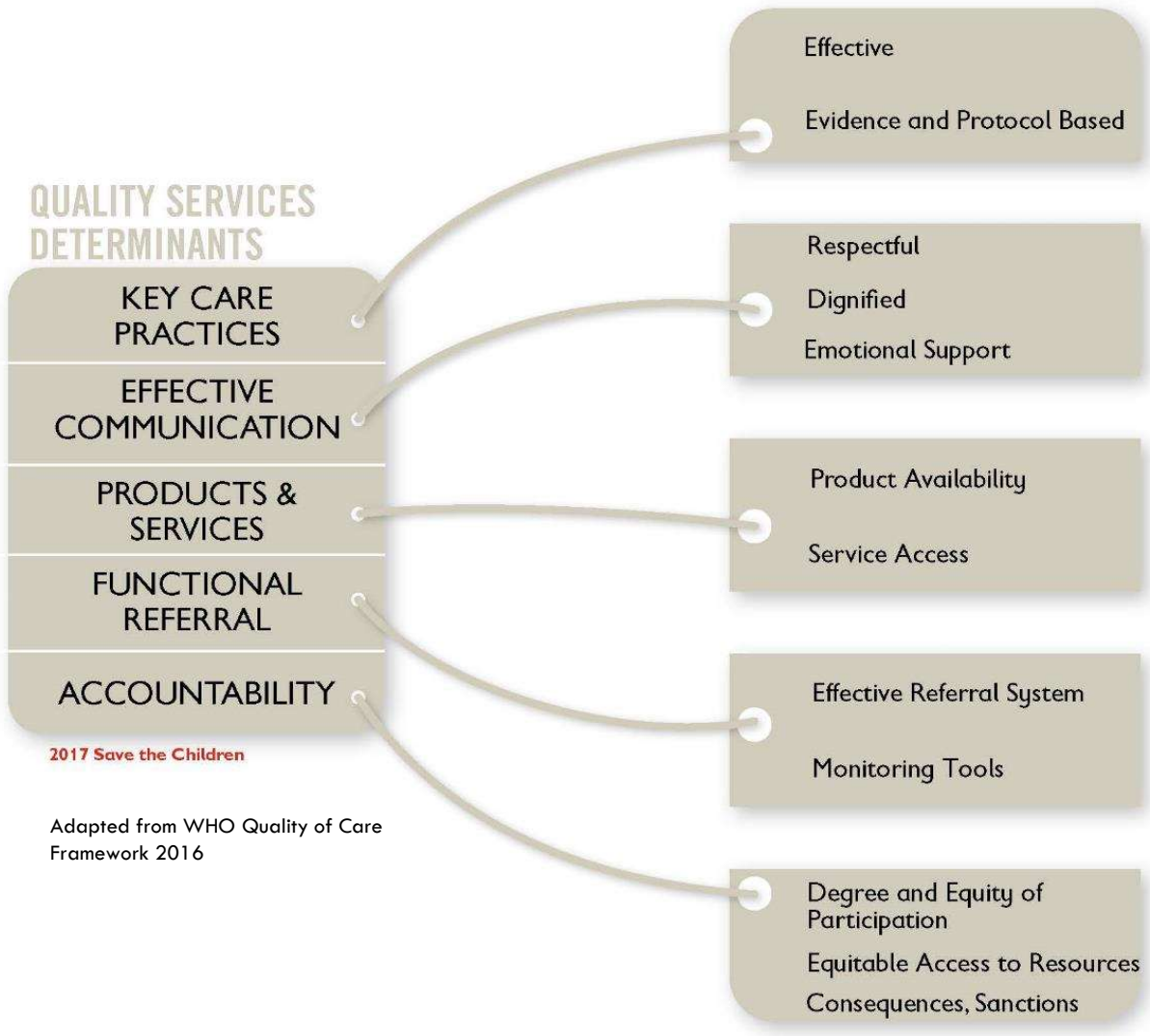
COMMUNITY CAPACITY STRENGTHENING DETERMINANTS



2017 Save the Children

Adapted from Communication for Participatory Development & Social Change Framework (Kincaid, Figueroa 2009), and Global Case Study on Measuring Community Capacity for Better Health and Social Change Outcomes (Alegre et al 2008).

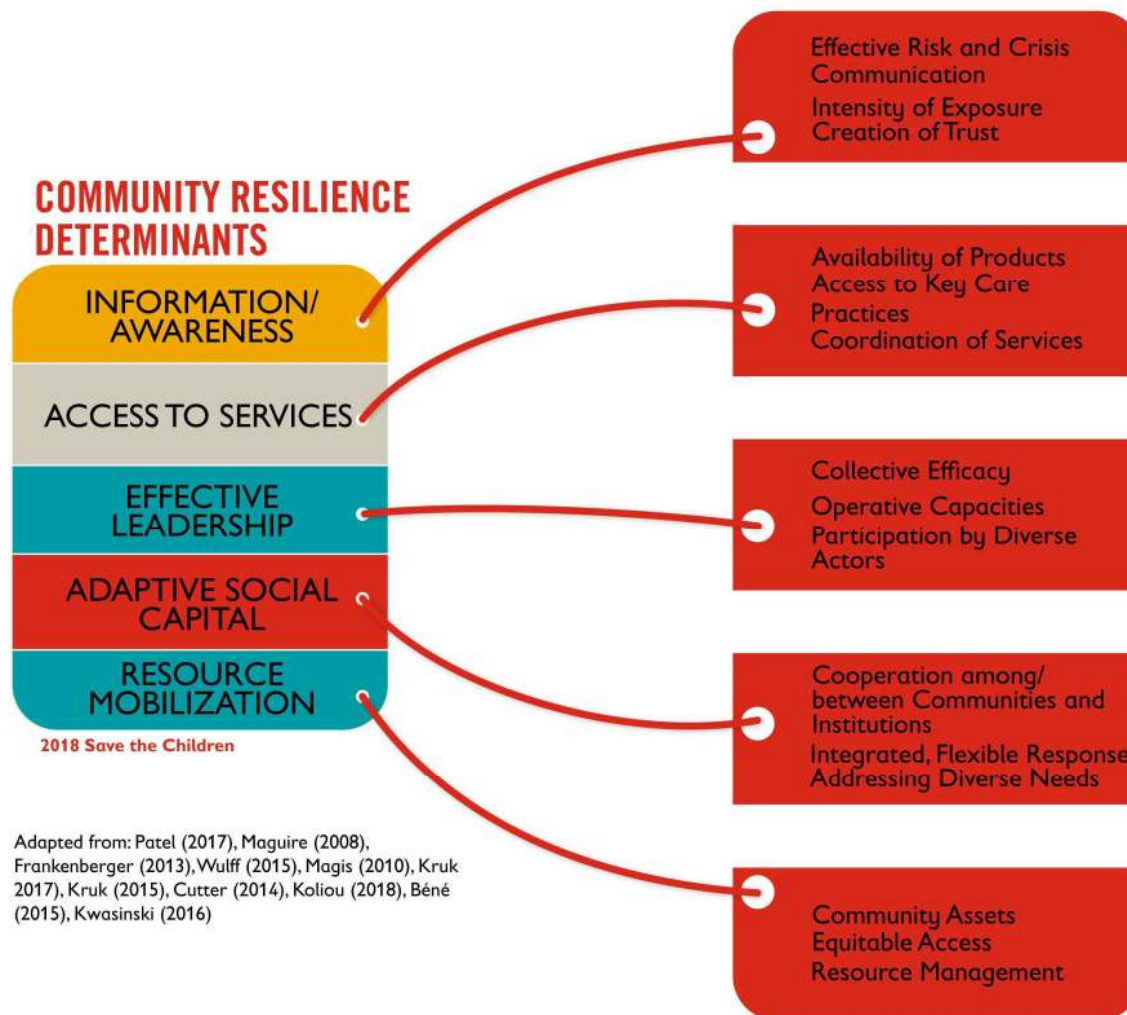
QUALITY SERVICES DETERMINANTS



2017 Save the Children

Adapted from WHO Quality of Care Framework 2016

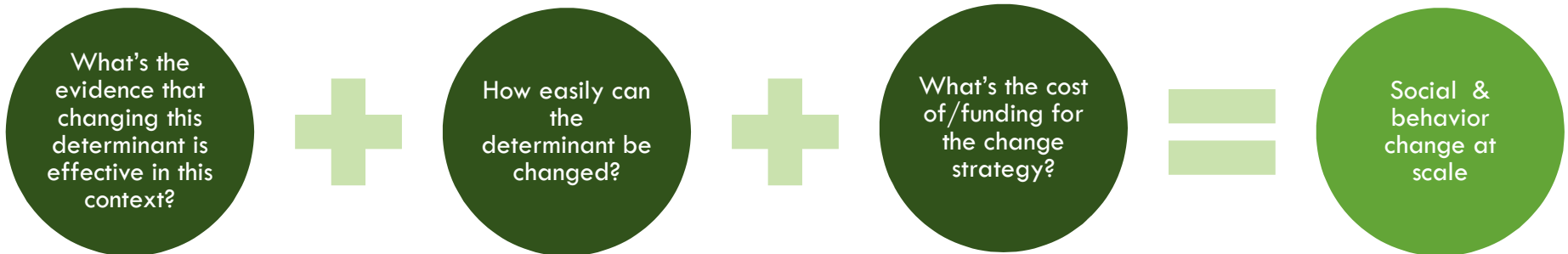
RESILIENCE DETERMINANTS



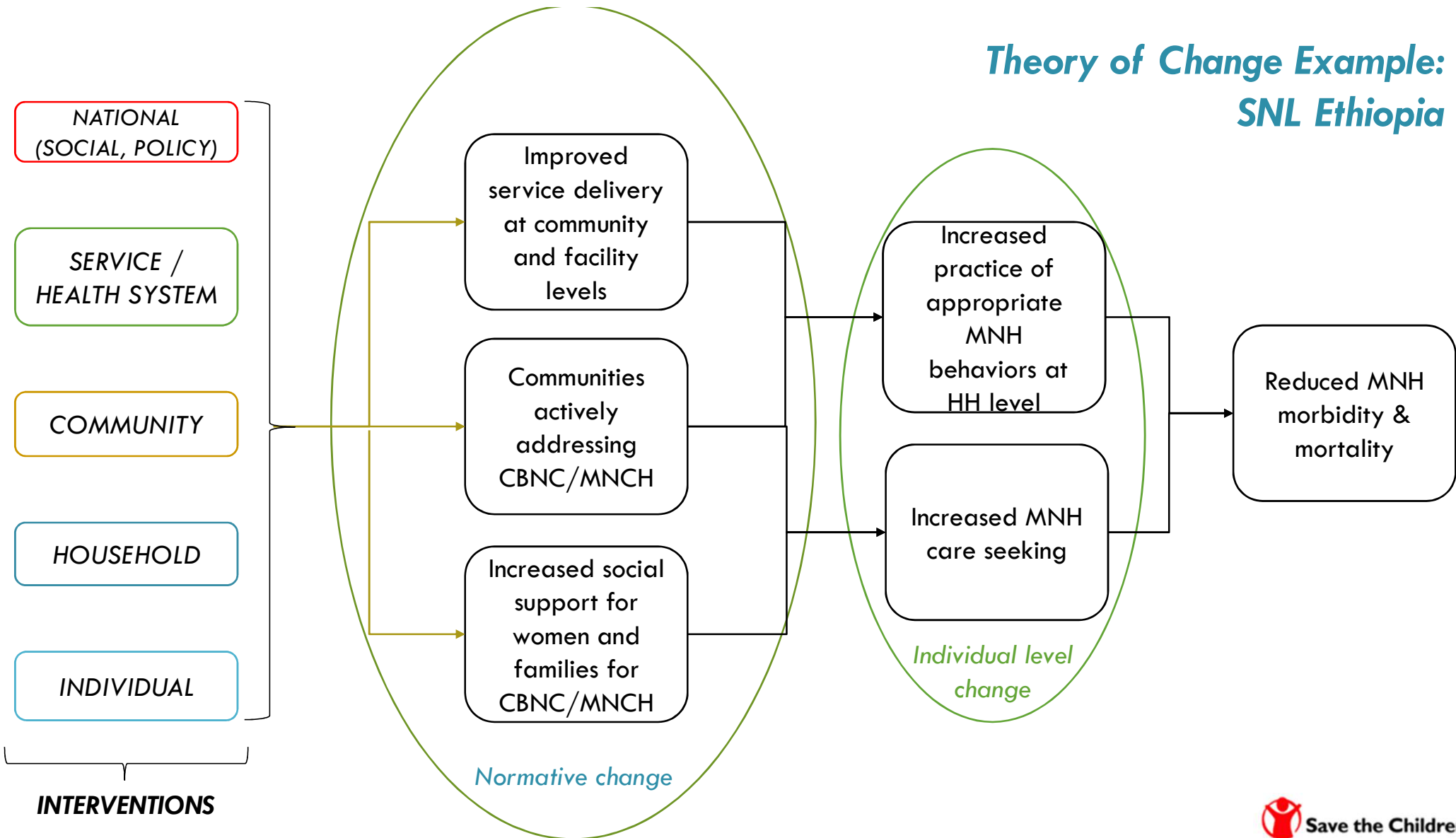
Adapted from: Patel (2017), Maguire (2008), Frankenberg (2013), Wulff (2015), Magis (2010), Kruk (2017), Kruk (2015), Cutter (2014), Koliou (2018), Béné (2015), Kwasinski (2016)

HOW TO CHOOSE DETERMINANT TAGS

Use a predicted level of outcome: A function of answering key questions...



Theory of Change Example: SNL Ethiopia



NATIONAL
(SOCIAL, POLICY)

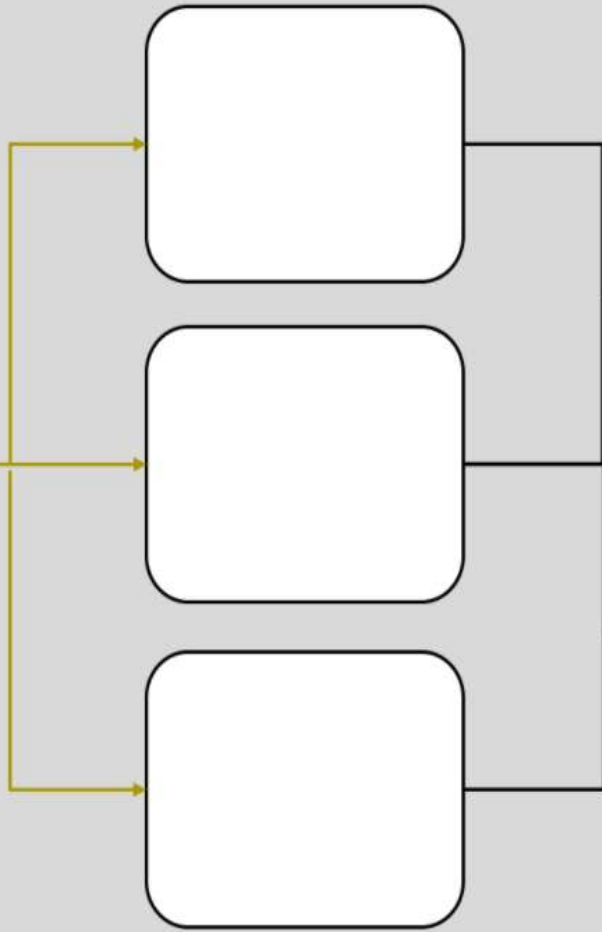
ORGANIZATION
SERVICE
DELIVERY

COMMUNITY

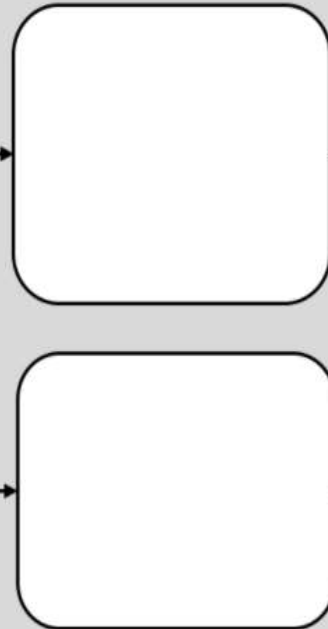
INTERPERSONAL

INDIVIDUAL

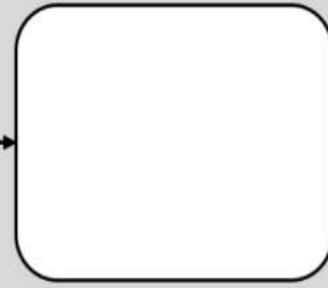
Interventions **4**



Community, Service/Health System, National level change **3**



Household or individual level change **2**



Final anticipated result/outcome **1**