



JOHNS HOPKINS
CENTER *for*
HUMANITARIAN HEALTH

From Evidence to Action: Improving Newborn Care in Displaced Person Camps in South Sudan

Samira Sami, DrPH
Associate Faculty

Ongoing Conflict Weakening the Health System

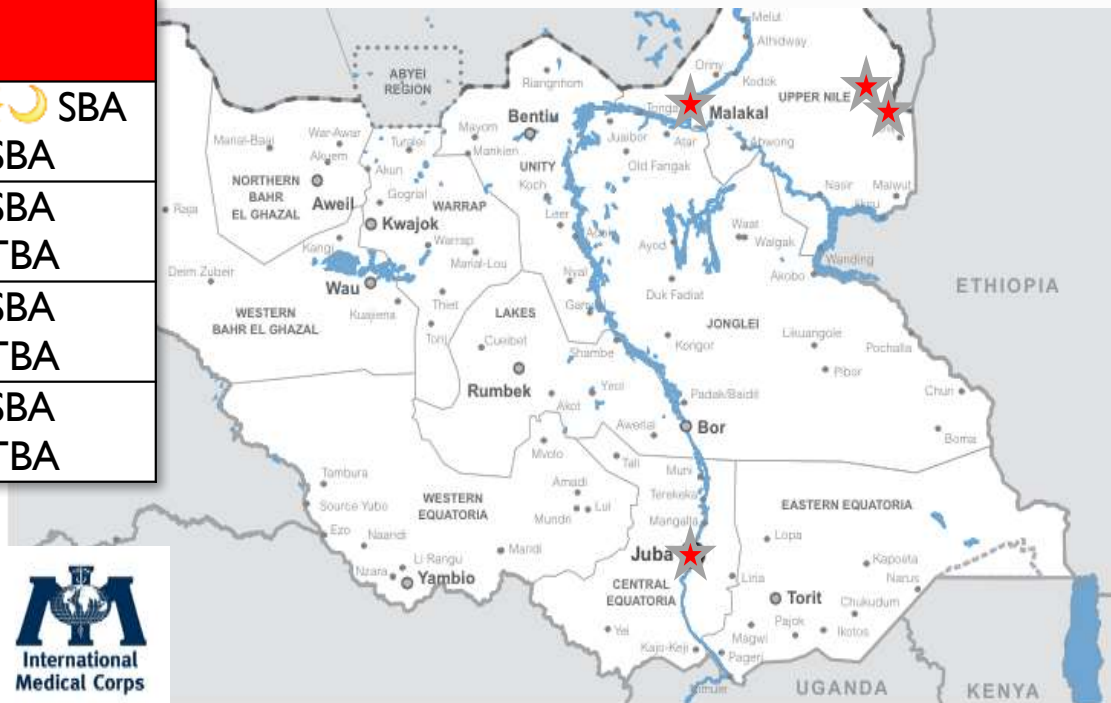


Malakal Camp 2015

Study Setting

Site	Population	Facilities
Juba	IDPs 28,000	Hospital: ☀️🌙 SBA PHCC: ☀️ SBA
Malakal	IDPs 42,000	PHCC: ☀️ SBA 🌙 TBA
Gendrassa-Maban	Refugees 17,473	PHCC: ☀️ SBA 🌙 TBA
Kaya - Maban	Refugees 23,223	PHCC: ☀️ SBA 🌙 TBA

* SBA: skilled birth attendant; TBA: traditional birth attendant;
PHCC: primary health care center





Hospital



Community



PHCC

Facility and Community Based Interventions



Program Manager
Workshop



Clinical Training



Supply Distribution

Improvements in Knowledge, Attitudes and Practices

CHW Knowledge (n = 72)

— low knowledge pre-intervention (48.3%)



(pre) Mean = 5.8 correct

(post) Mean = 9.6 correct



Normal temperature range

Normal respiration rate

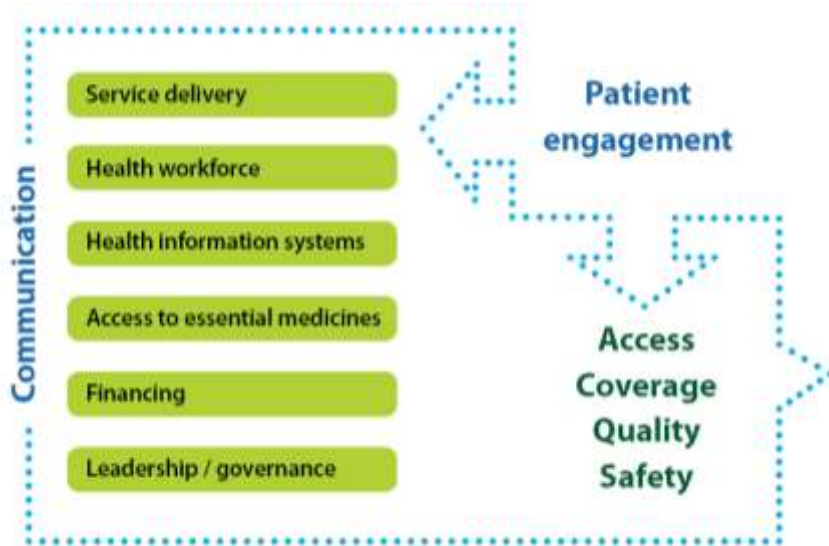
Delayed bathing

Key newborn health messages

“I received quite a number of newborn babies in Malakal that were sent by the CHWs themselves.”

- Midwife, Malakal

Challenges in a Collapsed Health System



“Before the crisis we were sending more referrals to the tertiary hospital [outside of camp], but now there are no referrals due to insecurity along the way. The UN is not allowing people to go out and this is a big challenge especially at nighttime...there were no ambulances at night. Even today we lost a baby due to lack of referral for a complicated delivery.”

- Senior manager

Bottlenecks and Solutions in the Health System

	Bottleneck	Solution themes
Leadership & governance	Policy and planning	<ul style="list-style-type: none">• Review and improve existing policies; sensitize health officials and donors on newborn care
Health workforce	Skilled care	<ul style="list-style-type: none">• Invest in training institutions and authorize task-shifting where appropriate
	Training	<ul style="list-style-type: none">• Integrate newborn care into training institutions
	Number and distribution of CHWs	<ul style="list-style-type: none">• Increase number of CHWs; dedicate cadre for maternal and newborn activities by transitioning TBAs to CHWs

Bottlenecks and Solutions in the Health System (2)

	Bottleneck	Solution themes
Service delivery	Infrastructure	<ul style="list-style-type: none">• Prioritize standards to allocate hygienic space for newborns
	Clinical protocols	<ul style="list-style-type: none">• Adopt simple protocols for mid-level cadre to take on additional responsibilities
	Referral system	<ul style="list-style-type: none">• Strengthen newborn care at primary care level• Partner with security personnel to refer during active conflict

Introduction to South Sudan's Every Newborn Action Plan



SOUTH SUDAN

National Strategy to End Preventable Newborn Deaths 2018 - 2022



ENAP: Bottleneck Analysis in South Sudan

Health system building blocks	Leadership and governance	Health financing	Health work force	Medical products	Health service delivery	Health information system	Community participation and ownership
Interventions							
Preterm birth	Red	Red	Red	Red	Red	Red	Red
SBA	Yellow	Red	Red	Green	Red	Green	Red
BEmOC	Yellow	Red	Red	Red	Red	Green	Red
CEmOC	Red	Red	Red	Red	Yellow	Green	Red
Basic NBC	Red	Red	Red	Red	Red	Red	Red
KMC	Red	Red	Red	Yellow	Red	Red	Red
Severe infection	Red	Red	Red	Red	Red	Red	Red
Inpatient care	Red	Red	Red	Red	Red	Red	Red



Focusing on Proven Interventions by Level of Service Delivery



National Ministry of Health

State Ministry of Health

County Health Department

Payam Health Committee

Boma Village Health
Committee

Strategic Objectives

1. Strengthen health systems for effective delivery of high impact and quality neonatal interventions
2. Enhance community engagement and partnership for improved access to and utilisation of high impact and quality newborn interventions
3. Strengthen newborn health response in humanitarian and fragile settings

Key Discussion Points

- ▶ Quality of newborn care can be addressed in humanitarian contexts
- ▶ Health system bottlenecks most affect sustainability of care for small and sick newborns
- ▶ National policies ensure newborn health is addressed in humanitarian and development programs



Thank you!

Study Co-Investigators

Ribka Amsalu (Save the Children), Alexander Dimiti (South Sudan MOH), Debra Jackson (UNICEF), Solomon Kenyi (IMC), Kate Kerber (Save the Children), Janet Meyers (Save the Children), Luke Mullany (Hopkins), Basia Tomczyk (CDC)

For more information

Samira Sami, DrPH
ssami1@jhu.edu